

i4



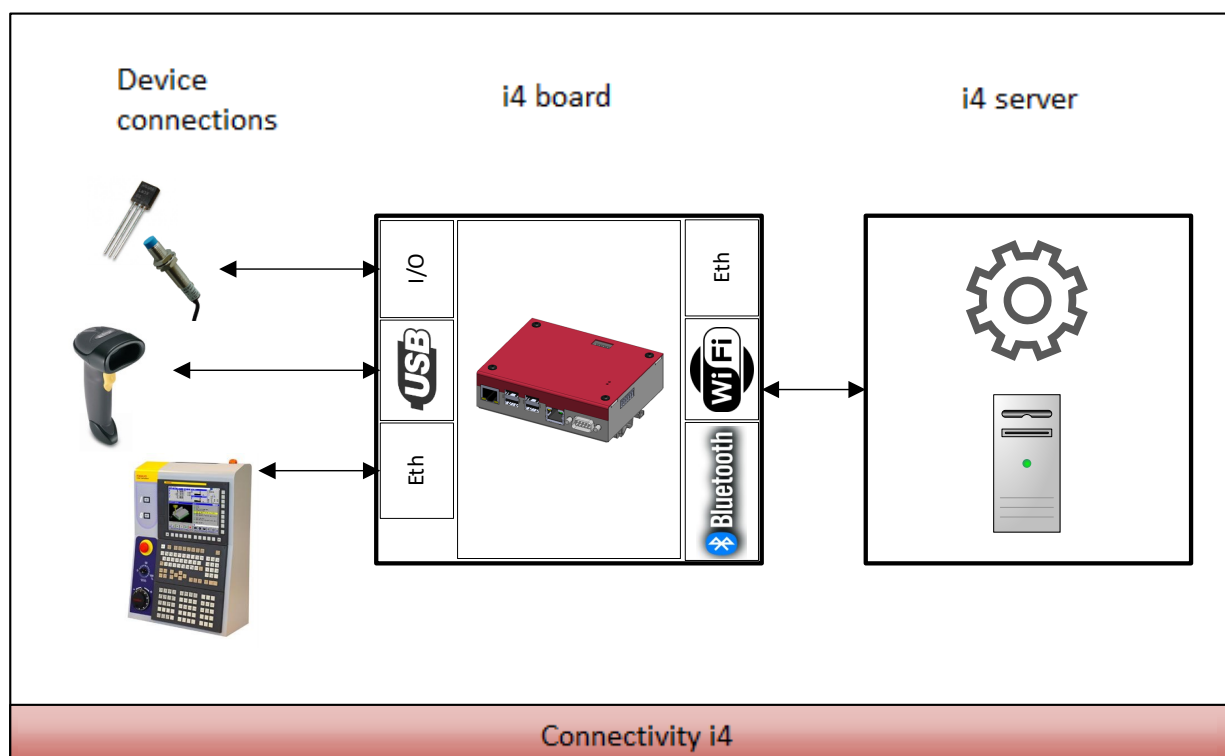
www.lcb-info.ch

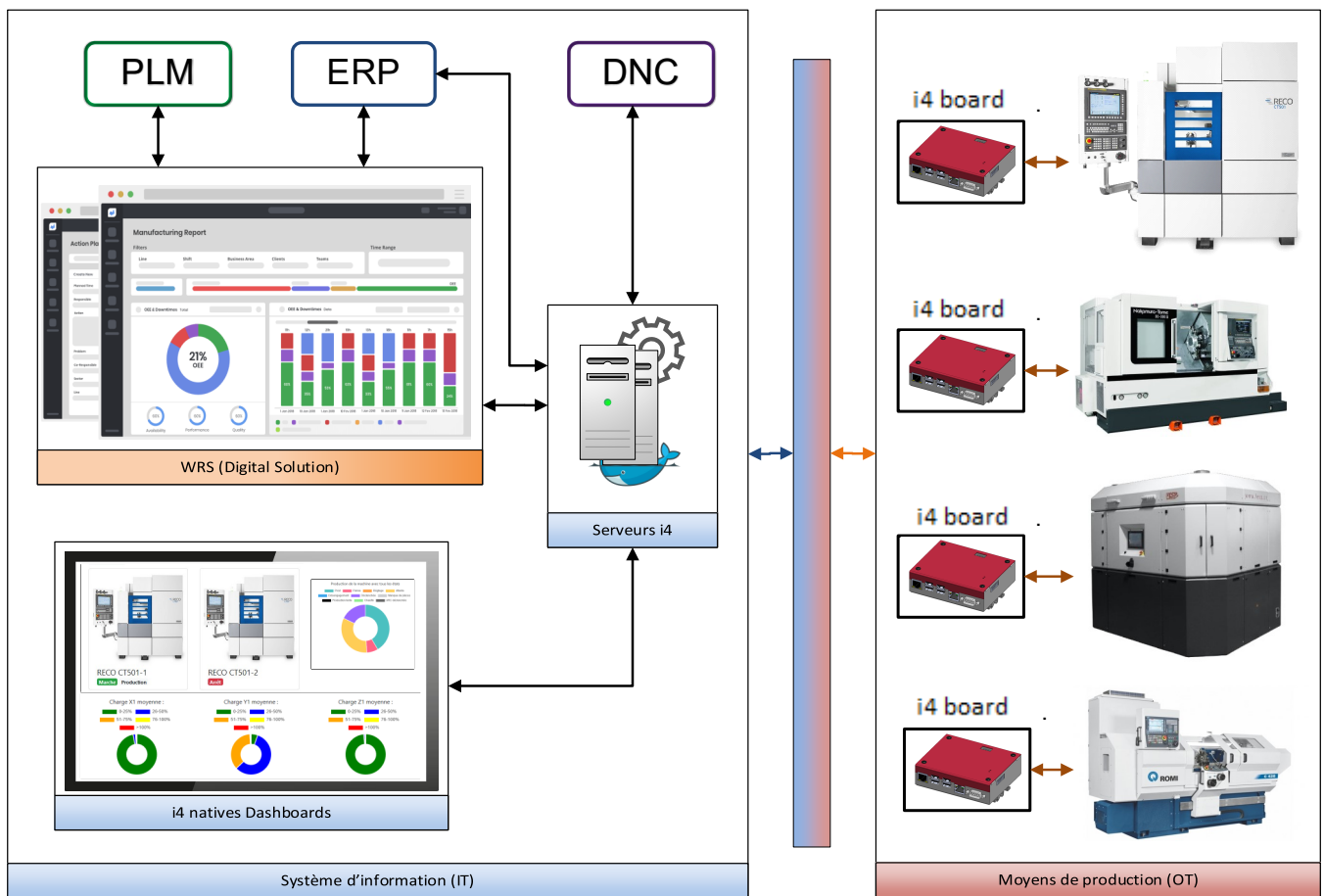
i4 is :

- An electronic box measuring 11x9 cm that can connect any type of production machine

i4 is able to :

- Communicate with the CNC, PLC or any additional sensor to collect or modify all relevant data on machine level
- Upload or download program and machine instructions (DNC)
- Store these data on a structural data base integrated on the server or on a customer SQL server
- Insert production data via QR code, camera, barcode reader, etc.





i4 integration :

- ✓ Link between ERP and production machine data
- ✓ Adaptation/correction of machine parameters and values
- ✓ Display of state and alarms in realtime directly on customer installation (embedded display option)
- ✓ Production data flow (OEE, etc.)
- ✓ Technical data provided for R&D service for future i4 upgrades on real database from production machine
- ✓ Storage of all data for all aftersales service (number of production hours, engine temperature, etc.)



Infrastructure



Development



Electronics